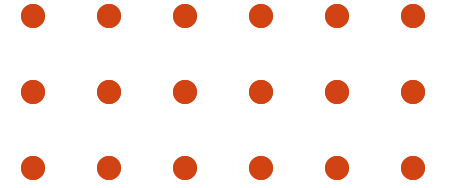




State-Based Approaches to Advancing Accreditation and Transformation

SHAPING TOMORROW'S PUBLIC HEALTH TODAY.



Agenda

- PHAB: overview of approaches to state-wide accreditation efforts
 - Ohio's PHAB Journey
 - Missouri's The Power of Partnership: A Transformational Framework for Local Health Agencies
 - Montana Approaches to Advancing Accreditation and Transformation
 - Q&A
-



Overview of State-wide Approaches
for Accreditation



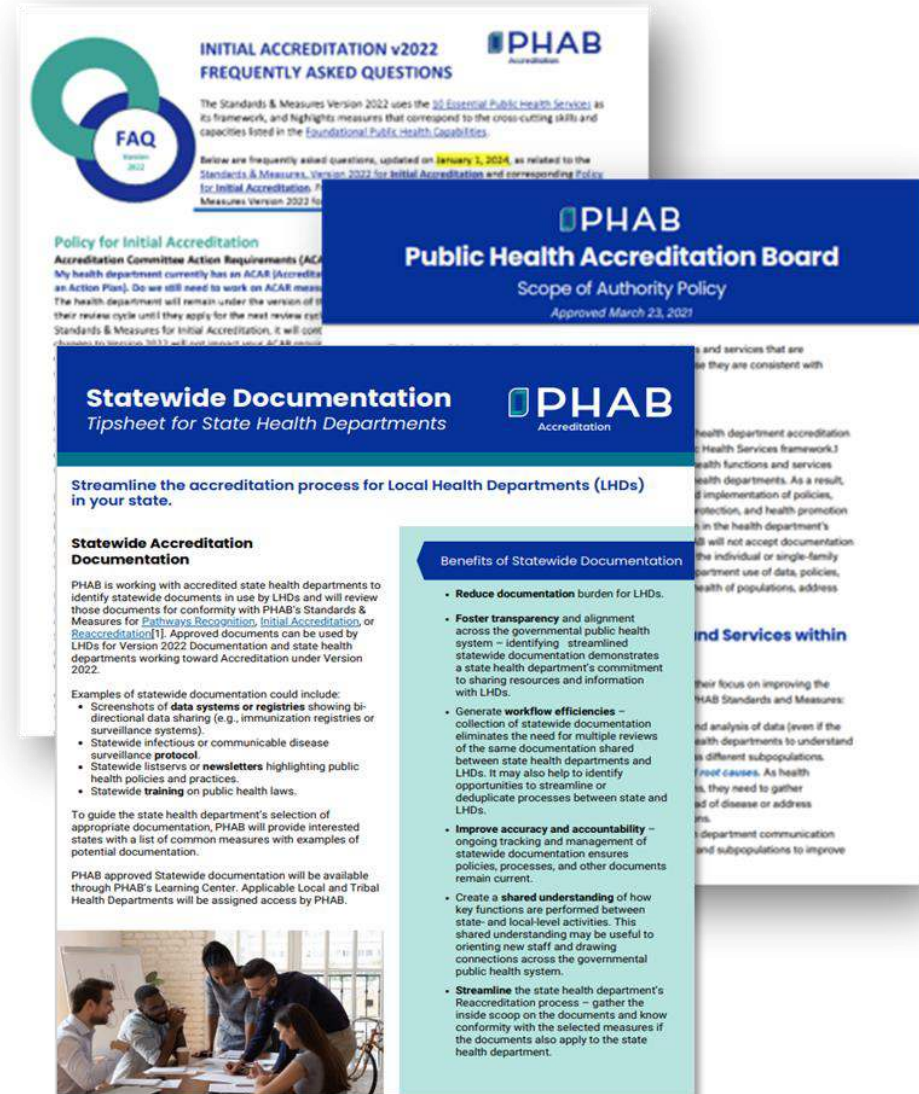
High Level Overview of Statewide Accreditation Approaches





PHAB Resources to Support Statewide Approaches

- Statewide Documentation Tip Sheet
- Service and Resource Sharing Approaches
- PHAB Readiness Assessment
- State/Territorial Peer Network
- Key plan Templates
- Tools for Transformation
- FAQ Documents
- Inboxes: askPHAB & PHABTA





Contact Us

- Brittan Williams: bwilliams@phaboard.org
- Reena Chudgar: rchudgar@phaboard.org
- PHAB accreditation process questions: askPHAB@phaboard.org
- PHAB TA questions: PHABTA@phaboard.org (PHIG TA should be submitted through PHIVE)



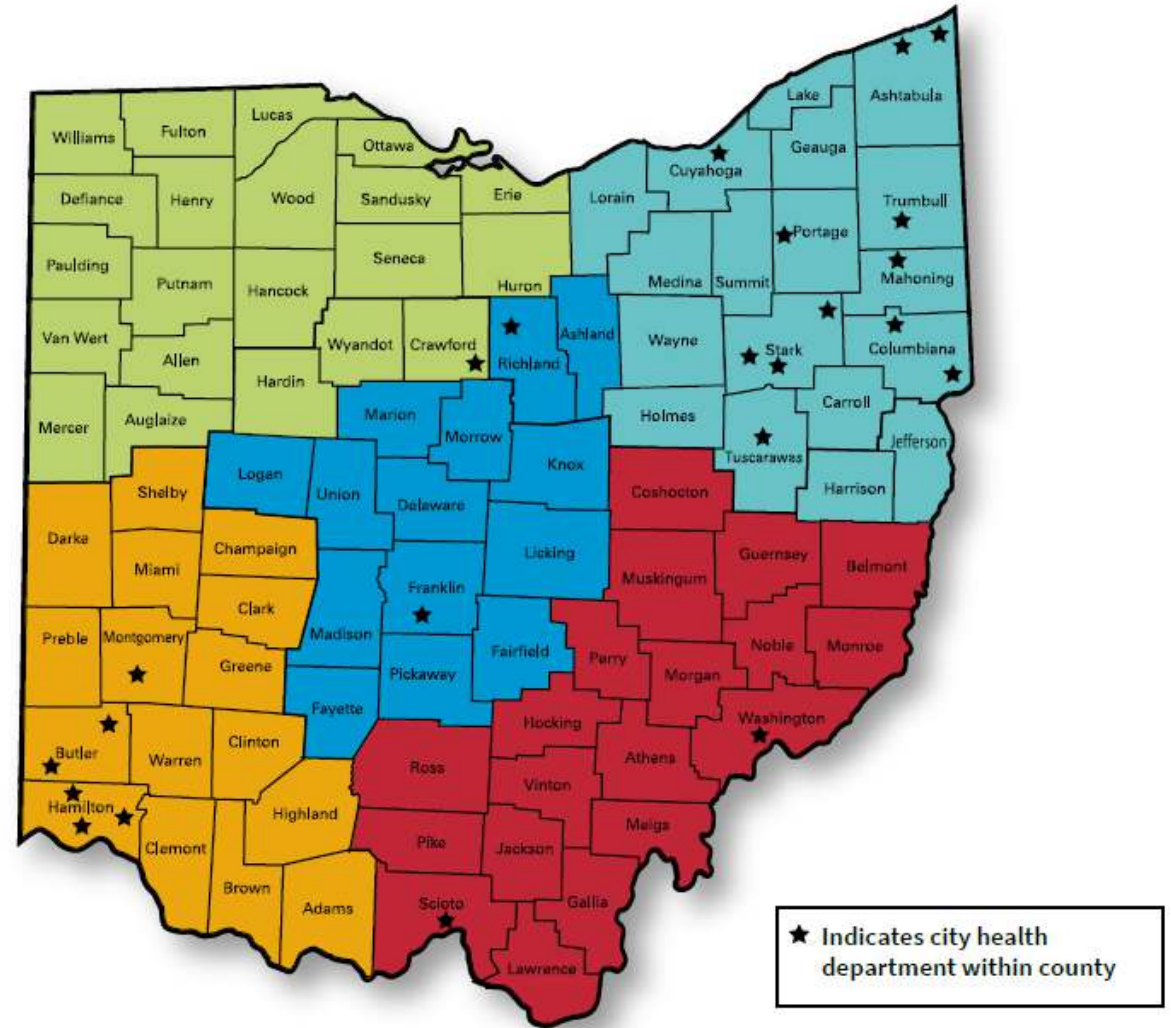
Ohio's PHAB Journey

PHIG Annual Convening 2025

Mackenzie Mays, Accreditation Coordinator
Center of Public Health Excellence - Ohio Department of Health

Ohio's Progress

- 2013 State statute to require accreditation.
 - 102 of 111 accredited.
 - 24 reaccredited.
 - Eight in process for initial.
- 2023 new statutory language about merger study.



Ohio's Journey of Support

- State funding for Local Public Health Accreditation Support Project.
 - Readiness Assessments of LHDs.
 - Individual and small-group training, technical assistance, and document reviews.
- Accreditation Learning Community (ALC).
 - Evolution of support by The Ohio State University and the Ohio Public Health Institute.
 - Continuous evaluation to improve offerings (location, format, topics, etc.)
 - Regional workshops.
- Performance Management System.
 - State provides unlimited licensing to a performance management system.
 - Dedicated PM provides enhanced training and technical assistance.

Ohio's Journey of Support

- Regional Staff.
 - Five liaisons providing proactive support to local health departments.
 - One dedicated staff member to support local accreditation efforts.
- Financial Support.
 - \$50,000 for accreditation and reaccreditation related activities.
 - All LHDs receive state subsidy, with an increased payment to those who have achieved and maintain accreditation.
- Statewide Documentation.

QUESTIONS?

ODH.OHIO.GOV

Mackenzie Mays, Accreditation Coordinator

Mackenzie.mays@odh.ohio.gov

Laura Rooney, Assistant Chief

Laura.rooney@odh.ohio.gov

Greg Chumney, Performance Manager

Gregory.chumney@odh.ohio.gov



**Department of
Health**

Accreditation Support

A framework for Missouri's Local Public Health Agencies

A three-tiered structure to encourage progress towards accreditation

1



Providing Customized Technical Assistance

- Learning communities, cohorts, workshops, online resource library
- Over 80% of MO LPHAs engaged in TA offerings

2



Removing the Cost Barrier

- Support for hiring, supplies, and contracting through PHIG
- ~\$5m distributed over two grant years to 50 jurisdictions

3



Encouraging Engagement and Readiness

- Free access to PHAB's Readiness Assessment and training
- General Revenue incentive payments tied to engagement make it possible to make money by participating



MISSOURI
PUBLIC HEALTH
INSTITUTE



MISSOURI DEPARTMENT OF
HEALTH &
SENIOR SERVICES

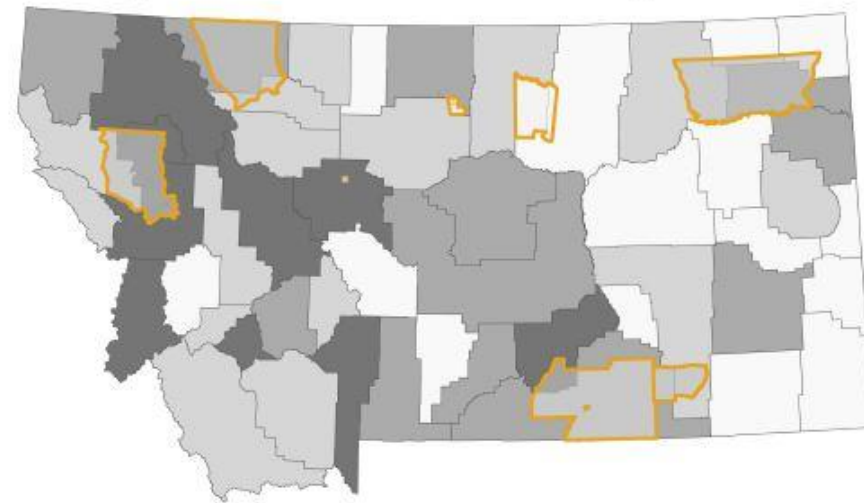
Montana Approaches to Advancing Accreditation and Transformation

Kerry Pride DVM, MPH, CVA, CEVMMP, DACVPM



DEPARTMENT OF
**PUBLIC HEALTH &
HUMAN SERVICES**

Size Classification	Population of Residents	Full-time Equivalents (FTEs) Range
Frontier	Fewer than 5,000 (18 jurisdictions)	1 – 9 FTE
Small	Between 5,000 and 9,999 (20 jurisdictions)	1.75 – 25 FTE
Medium	Between 10,000 and 29,999 (13 jurisdictions)	1.2 – 14.3 FTE
Large	30,000 or more (9 jurisdictions)	9 – 90.62 FTE



Jurisdiction size ☐ Frontier ☐ Small ☐ Medium ☐ Large ☐ Reservation



Statewide Documentation



What was approved?

- On September 12, 2024 PHAB approved use of the Montana Infectious Disease Information System (MIDIS) Memorandum of Agreement and Access Request forms
- The signed request forms demonstrate conformity with Measure 1.2.2 A- Participation in data sharing with other entities.
- Applies to Pathways Recognition, Initial Accreditation, and Reaccreditation
- Statewide documentation approval is granted for the duration of Version 2022 of The Standards.
- PHAB will continue to work with Montana DPHHS to identify additional opportunities for statewide documentation approval.



Montana Infectious Disease Information System (MIDIS) Memorandum of Agreement

The Montana Infectious Disease Information System (MIDIS) is a secure internet-based surveillance system developed by the Centers for Disease Control and Prevention (CDC) and used by the Montana Department of Public Health and Human Services (DPHHS) since 2007. This central location of data allows for effective management of disease investigations and is valuable in planning and implementing public health control measures. MIDIS is also used to report communicable diseases to the CDC, and serves as a repository for state communicable disease data at local and state levels. MIDIS also receives electronic laboratory results (ELR) from select laboratories which allows the state and local health departments to view results in a timely manner.

In addition to managing cases of reportable disease, local agencies use MIDIS to manage and report cases to DPHHS. Use requires a computer with internet connection, Internet Explorer® and Microsoft Excel®. A keyfob (a small hardware device providing a personalized ID and passcode) is provided to each user for secure access to the system.

To apply for MIDIS access, complete the enclosed Non-DPHHS Employee System/File Access Request (OM300) form and this MIDIS agreement. Once a completed signed and dated access request form and agreement are received, DPHHS staff will process the application. Upon receiving access to MIDIS, a secure keyfob will be sent to the applicant.



DEPARTMENT OF
PUBLIC HEALTH &
HUMAN SERVICES

Preparing Health Departments

- Funding and/or TA for community health assessment, community health improvement plans, and strategic plans
- Policy and Procedure Cohort
 - Mission, vision, values
 - Communications plan
 - Data request policy and procedure, HIPPA, and security policy
 - Performance management and quality improvement
 - Succession planning, workforce development plan
 - Continuity of operations plan and access and functional needs plan
 - Environmental health plan and maternal and child health plan

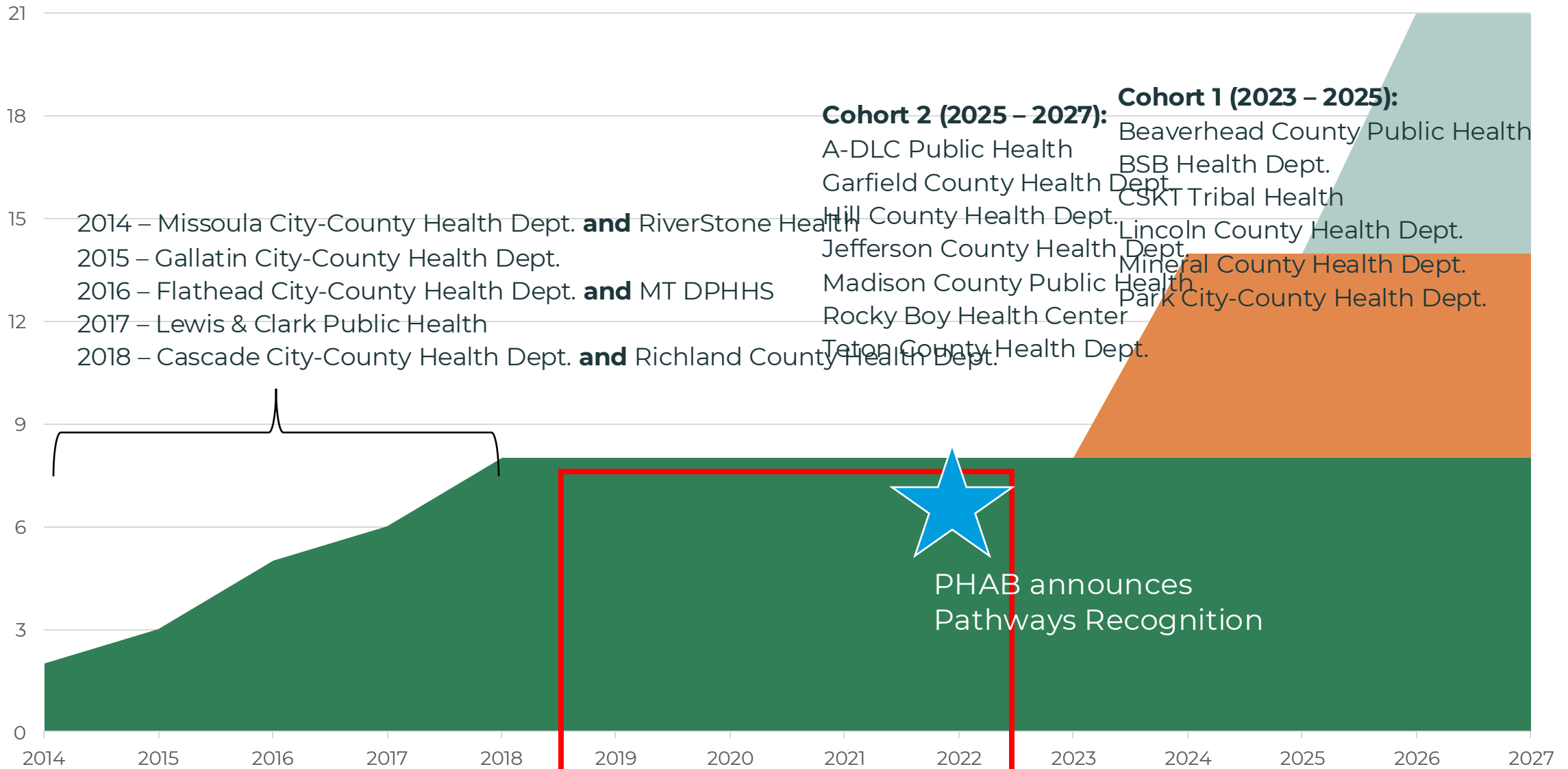


Pathways to Recognition Learning Collaborative

- ▣ **Cohort style approach** → health departments work through the program together with opportunities to share ideas and crowdsource
- ▣ **Coordinated support and TA** → MTPHI and PHSIO facilitate a review of the Standards & Measures for Pathways Recognition, assist HDs in compiling draft documentation, and provide ongoing training and TA
- ▣ **Virtual learning community** → utilizing an online platform to share resources, tools, documents, templates, etc. and promoting peer-learning amongst participating HDs



Montana Accreditation Activity





Montana 21C

Strengthening Public Health
Together



Foundational Public Health Services Assessment

Why was the survey completed?



01. Understand the delivery of Foundational Public Health Services across Montana.

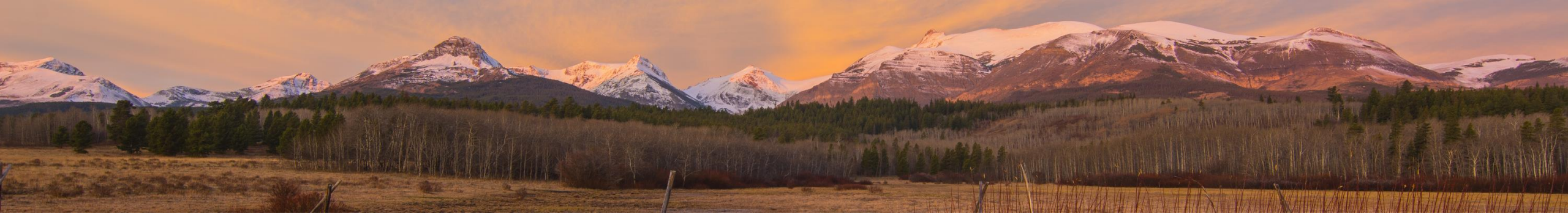


02. Utilize the data to capitalize on strengths and address areas of need by collaborating with local and tribal jurisdictions and Montana 21C.



03. Effectively combine, allocate, or utilize our collective resources—such as talent, intelligence, funding, and more—to ensure that all health jurisdictions can deliver the Foundational Public Health Services they aspire to provide.





MONTANA 21C

Mission

Foster trust and collaboration across Montana's public health system to enhance the delivery of the foundational public health services that promote health and wellbeing.

Vision

We envision a strong and agile public health system at all levels.

Values

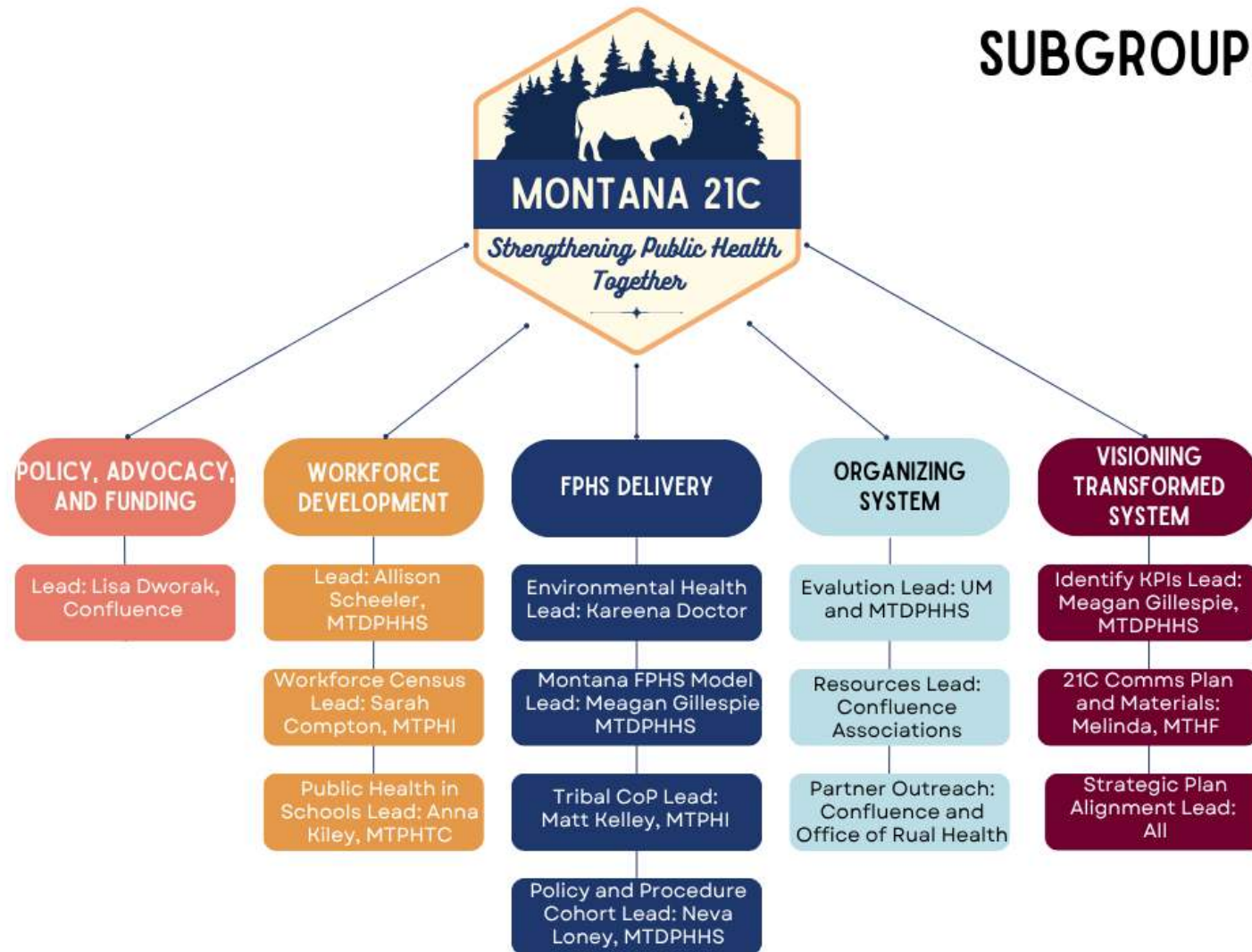
Public health is a shared responsibility. We foster partnerships across government agencies, healthcare providers, community organizations, and community members to create lasting solutions for better health.

SYSTEMS APPROACH: MONTANA 21C BRINGS ORGANIZATIONS TOGETHER TO ADVANCE THE DELIVERY OF THE FOUNDATIONAL PUBLIC HEALTH SERVICES IN MONTANA



DEPARTMENT OF
PUBLIC HEALTH &
HUMAN SERVICES

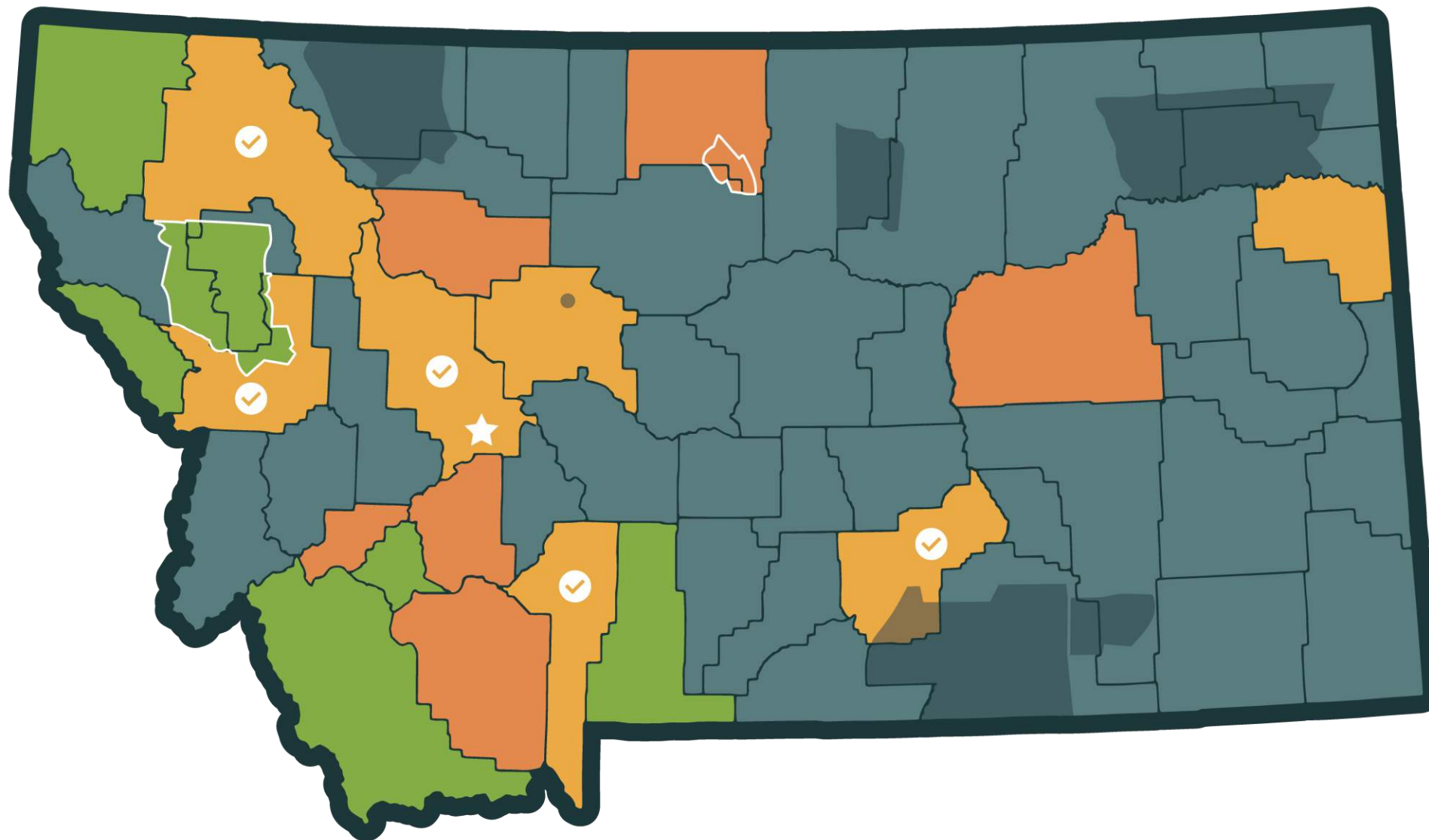
SUBGROUPS



Current Work

- Workforce survey and census (in-progress)
 - Survey will inform Workforce Development Plan
 - Census tool will account for every local and tribal health department employee and their responsibilities
 - Workforce calculator will identify if there is a workforce shortage in Montana and if so, what is the gap
- Starting workgroup with Montana State University, Montana Environmental Health Association, and Department of Environmental Quality on integrating environmental and public health
- Continuing to align community health planning processes between public health and health care
- Public health rebranding campaign with schools and universities
- Begin work on Montana specific FPHS model
 - Include linkage to behavioral health and mental health





-  2023-2025 Pathways Health Departments
-  2025-2027 Pathways Health Departments
-  Accredited Health Departments
-  Reaccredited Health Departments
-  DPHHS (Helena) Accredited



DEPARTMENT OF
PUBLIC HEALTH &
HUMAN SERVICES

Questions?



DEPARTMENT OF
**PUBLIC HEALTH &
HUMAN SERVICES**