



# Advancing Data Modernization Roadmaps with a Sustainability Lens

BY PHIG PARTNERS



SHAPING TOMORROW'S PUBLIC HEALTH TODAY.



**What areas of sustainability are you most interested in learning more about?**

# Agenda

1. Introduction
2. Sustainability planning in the current landscape
3. Panel discussion: Speaker perspectives on sustainability planning
4. ASTHO's DMI sustainability planning toolkit
5. Q&A

# Session Speakers



**Chris Brueske**  
**(moderator)**

Director of Office of Data  
Strategy and  
Interoperability  
*Minnesota Department  
of Health*



**Emma Spencer**

Director of Division of  
Public Health Statistics  
and Performance  
Management  
*Florida Department of  
Health*



**Jesse Cushman**

Unit Administrator, Data  
Modernization Director  
*State of Nebraska*

# Session Speakers



**Derek Vale**

Chief Data Officer  
*Hawaii Department of  
Health*



**Jonathan Johnson**

ELC Integration Software  
Architect  
*Hawaii Department of  
Health*



**Paul Messino**

Director of State Health,  
Principal Researcher  
*Mathematica*

# Session Learning Goals

1. Develop understanding of the importance of sustainability planning in the current funding and policy landscape
2. Learn about a publicly available data modernization sustainability planning resource developed by ASTHO and Mathematica and how it can be used to incorporate sustainability planning into data modernization roadmaps
3. Learn about public health agency approaches to integrating sustainability planning into data modernization efforts

# **Sustainability Planning in the Current Landscape**

---

# What is sustainability?

- Sustainability is the process of ensuring that a project can be fully integrated into ongoing operations to benefit diverse interested parties
- Sustainability is not just funding
- Sustainability includes interdependent domains

Johnson, Knowlton, C. Hayes, H. Center, C. Daley. "Building capacity and sustainable prevention innovations: a sustainability planning model." Evaluation and Program Planning, vol. 27, 2004, pp.135-149.

## Sustainability domains

---

1. Administrative structures and formal linkages
2. Ownership
3. Champions and leaders
4. Resources
5. Administrative policies and procedures
6. Relationships with interested parties
7. Monitoring and effectiveness



# What is sustainability planning?

- Sustainability planning is a structured approach that identifies how a project can be maintained and strengthened across the sustainability domains
- Should start early (vs. at the end or after) to establish strong buy-in and efficient processes to integrate the project into ongoing operations
- Results in a sustainability plan that includes:
  - An explicit, detailed long-term goal
  - Strengths and areas for improvement
  - Short- and long-term action steps

# Modernizing data systems supports public health's core mission and data capabilities

- Data modernization builds capacity to support essential public health services:
  - Building and maintaining a strong organizational infrastructure
  - Improving and innovating through evaluation, research, and quality improvement
  - Building a diverse and skilled workforce
- Involves people, process, technology

# Sustainability planning is more important than ever

- Moving past the “boom and bust” cycle
- Building interoperability across all systems
- Creating reusable, modular systems for multiple purposes
- Blending and braiding funds
- Building resilience into public health systems

# **Panel Discussion: Speaker Perspectives on Sustainability Planning**

---

# Panel discussion: Sustainability approaches

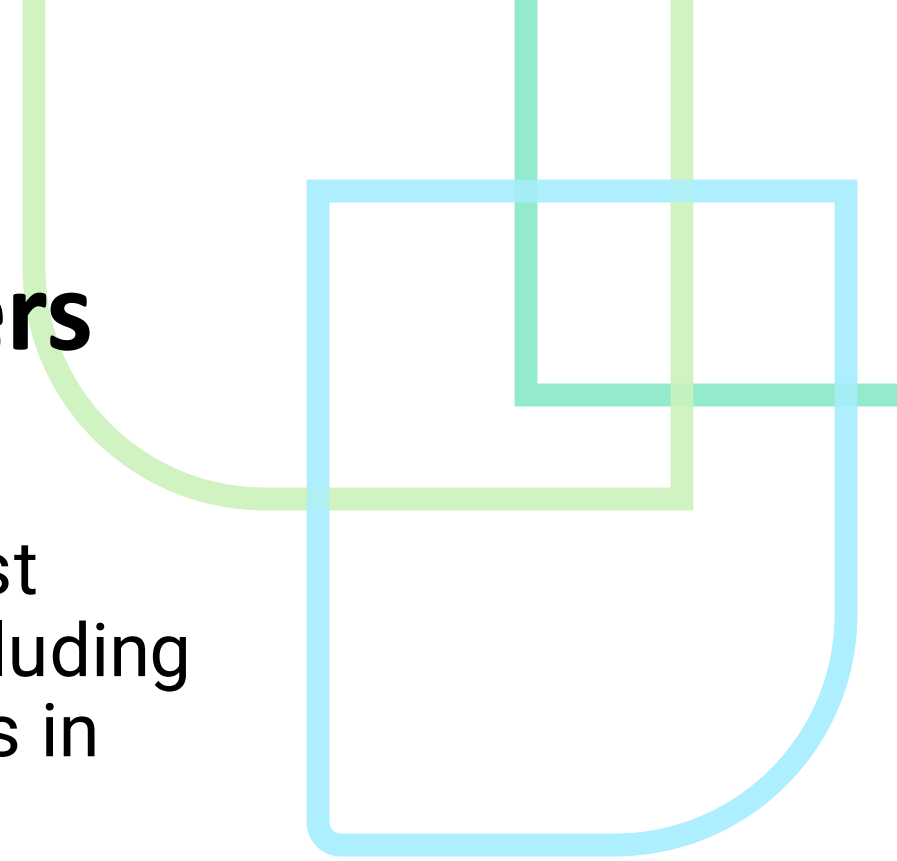
- Share an example of a high-profile project or system where sustainability planning played a critical role.
  - How did you ensure a holistic approach, integrating considerations, such as workforce development, training, systems implementation, and funding, into your overall strategy?
-

# Panel discussion: Using existing resources

- How have you used existing resources or technologies to enhance the sustainability of your data modernization projects?
- Can you share examples?

# Panel discussion: Engaging others

- What specific engagement strategies for sustainability planning have you found most effective in involving interested parties, including leadership and different teams or programs in your organization?
- How do you ensure ongoing engagement and collaboration beyond the initial planning phase?



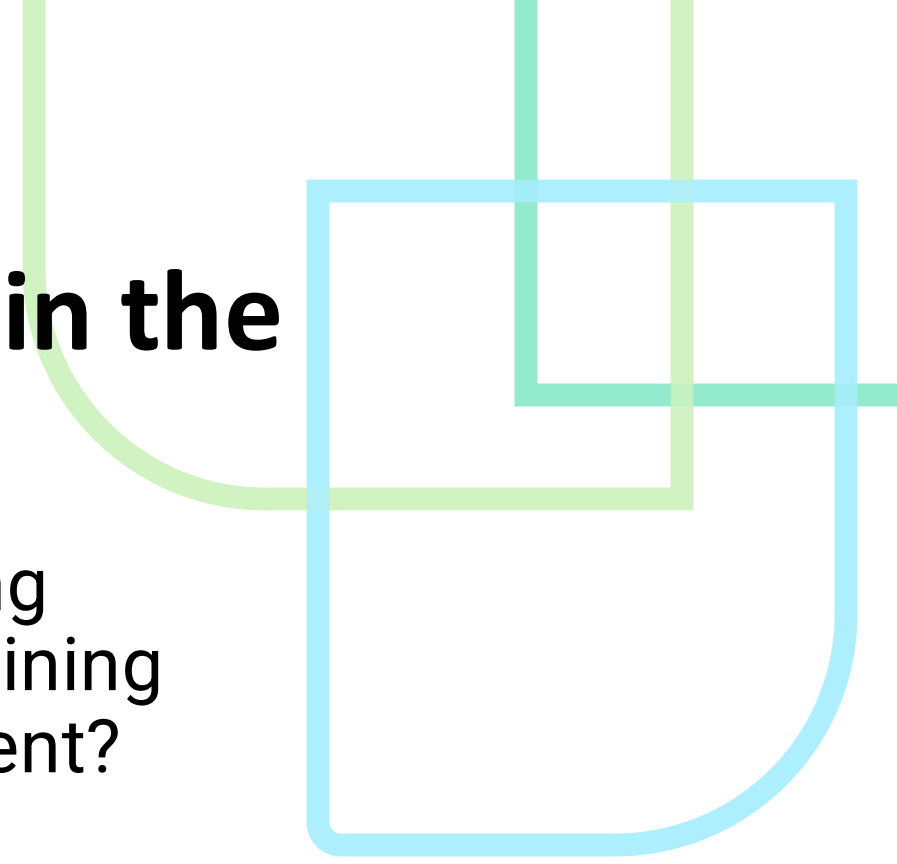
# Panel discussion: Addressing challenges

- What challenges did you anticipate or experience related to sustainability?
  - How did you mitigate or address them?
  - How did your plans compare with reality?
-



# Panel discussion: Sustainability in the current environment

- What has been your experience with staffing support and changes to staffing for maintaining core infrastructure in the current environment?



# ASTHO's DMI Sustainability Planning Toolkit

---

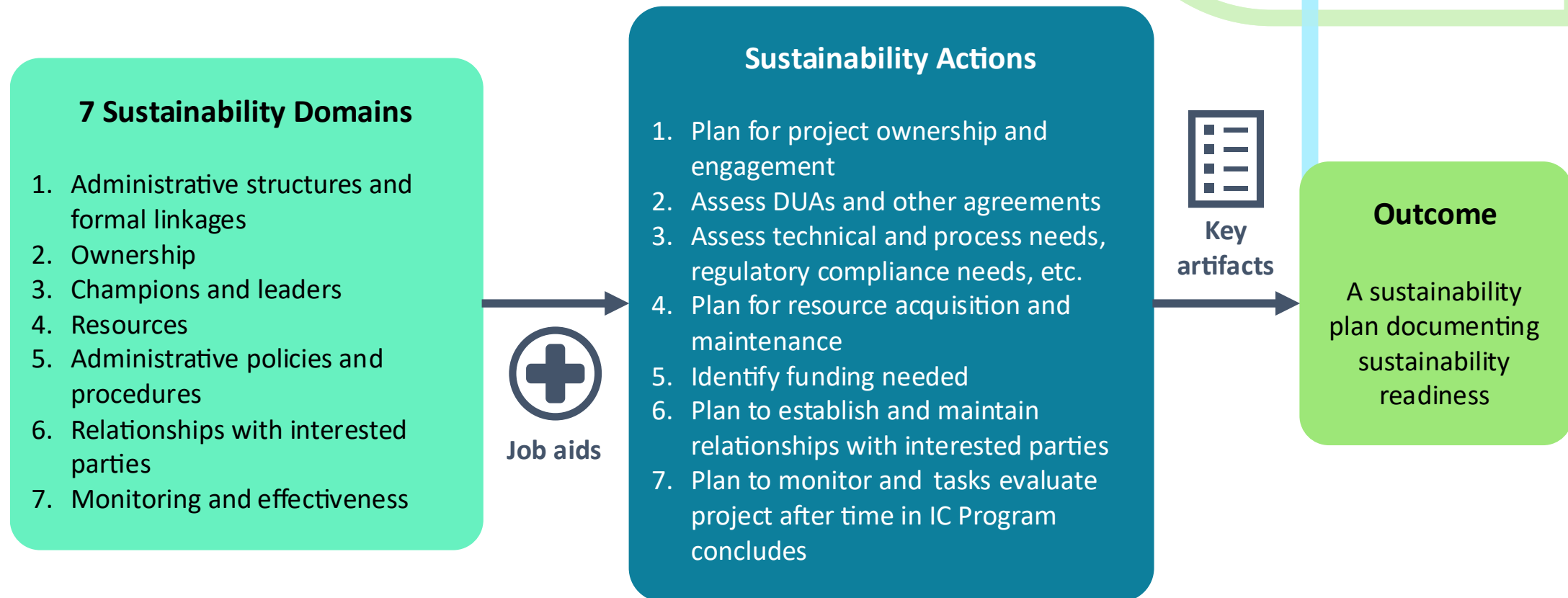
# Sustainability Planning Primer and Toolkit

- [“Sustaining DMI: Leveraging Medicaid to Advance Public Health Data and Surveillance”](#) available on ASTHO’s website
- Informed by an existing sustainability planning model developed by Johnson et al. (2004) based on a systematic literature review on sustaining projects at the organizational, community, and state levels

Assar, Soraya, Mynti Hossain, and Paul Messino. “Sustaining DMI: Leveraging Medicaid to Advance Public Health Data and Surveillance.” Arlington, VA: Association of State and Territorial Health Officials, July 24, 2024.  
Johnson, Knowlton, C. Hayes, H. Center, C. Daley. “Building capacity and sustainable prevention innovations: a sustainability planning model.” *Evaluation and Program Planning*, vol. 27, 2004, pp.135-149.

# Sustainability Planning Framework and the IC Program

- The IC Program is using the information in the sustainability planning toolkit to guide PHAs in developing sustainability plans



# Using the Toolkit

## Sustainability Actions

1. Plan for project ownership and engagement
2. Assess DUAs and other agreements
3. Assess technical and process needs, regulatory compliance needs, etc.
- 4. Plan for resource acquisition and maintenance**
5. Identify funding needed
- 6. Plan to establish and maintain relationships with interested parties**
7. Plan to monitor and tasks evaluate project after time in IC Program concludes

- We just heard real-world examples of how some PHAs used:
  - Existing resources (including staffing) to enhance the sustainability of their projects
  - Engagement strategies to collaborate with interested parties in sustainability planning
- Let's look at 2 examples of how the toolkit can support this work

# Example 1: Plan for Resource Acquisition and Maintenance

- **What to do and when?** When considering resources needed for the project, a PHA can develop a plan for resource acquisition and maintenance that identifies staff, technology, and funding needed to sustain the project, with an emphasis on diverse funding to stabilize all other resources (e.g., blending and braiding funding streams)
  - **Why is this important?** Can facilitate maintenance and advancements to the project, such as updates to the technology
  - **What results indicate sustainability readiness?**
    - A resource acquisition and maintenance plan that identifies diverse and stable sources for resources, and opportunities to blend and braid funding streams
-

# Example 1: Job aid based on the Toolkit

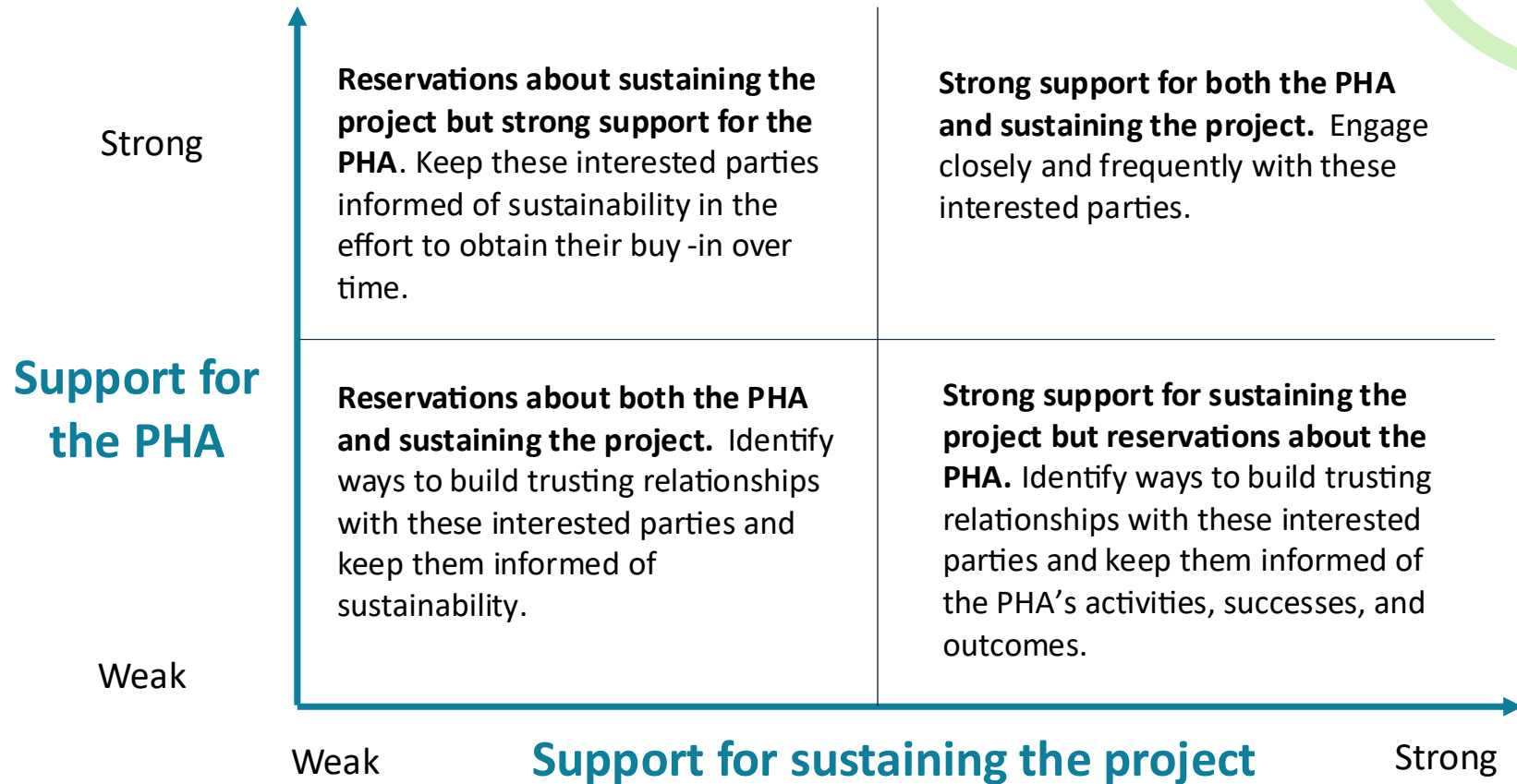
Resource	Relevance to use case	Status of acquisition and maintenance	Resource-sharing with partners	Costs to acquire and/or maintain	Action items to acquire and/or maintain
<b>Staff</b> (e.g., technical expert, compliance officer)					
<b>Technology</b> (e.g., hardware, software)					
<b>Funding</b> (e.g., federal, state, private, and blending and braining opportunities)					

## Example 2: Plan to Engage Interested Parties

- **What to do and when?** Develop a plan to establish and maintain relationships with interested parties (e.g., participants in or beneficiaries of the project, implementers, and developers) as project implementation is underway
  - **Why is this important?** Interested party buy-in can promote and support sustainability (interested parties are not directly involved in the project but are affected by it)
  - **What results indicate sustainability readiness?**
    - Positive relationships with interested parties
    - Alignment between the project vision, interested party needs, and project results
-



## Example 2: Job aid in the Toolkit



# Q&A

---

# Key Takeaways

- Integrate sustainability planning into existing structures, policies, and procedures
- Manage funding
- Consider reusable technology
- Begin sustainability planning early
- ASTHO's sustainability primer provides a framework for planning
- Stay connected!

# Thank You!

For more questions and assistance regarding the sustainability toolkit and other sustainability related questions, Data Modernization Technical Assistance (DM TA) requests can be submitted in PHIVE

---

For more about the IC Program: [phdmic@astho.org](mailto:phdmic@astho.org)  
[phinrastructure.org/implementation-centers](http://phinrastructure.org/implementation-centers)

# **Thank you for joining the Preconference!**

...the conversation continues at the  
PHIG Annual Recipient Convening



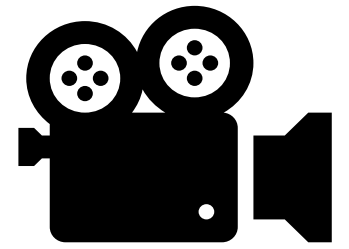
# Explore the Meeting Venue

- **2 floors of meeting spaces on the 2<sup>nd</sup> and 4<sup>th</sup> floors**
  - Dedicated escalators, stairs, and elevators
  - The escalators skip the 3<sup>rd</sup> floor entirely
- **2<sup>nd</sup> floor:** Partner tables and a Support Desk
- **4<sup>th</sup> floor:** Sponsor Foyer, Connect Lounge, and the Welcome Reception
- **Gateway Level:** Wellness rooms and outdoor patio

Event Pods or “Nooks” are arranged throughout for small, informal, and impromptu meeting spaces.

---

# Share Your Story!



## IC Program Interviews: Wave 1 Participants

**We Want to Hear from  
You!**

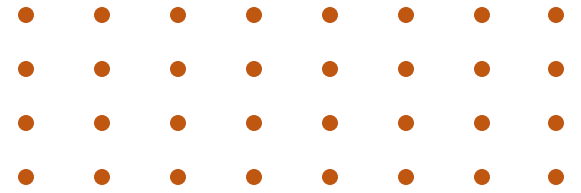
Short, 5–7 minute interviews with  
**Wave 1 PHAs & IC Program partners**

**When:** Mon 8/18 – Thurs 8/21

**Where:** Sterling 5 (2nd floor)

*Sign up by scanning the QR Code,  
or come find us during a break!*





# Get Social With Us!

Use **#ARC2025** **#PHIG** in your posts and stories.





# Sponsors

## Premier

 **inductivehealth**

 **ENVISION**  
TECHNOLOGY PARTNERS

 **Metopio**

**UNITED HEALTH FOUNDATION®**

## Silver

  
**RSM**

  
**STC**  
health

## Bronze

 **HLN**  
CONSULTING  
Innovators in  
Health Informatics

## WiFi



